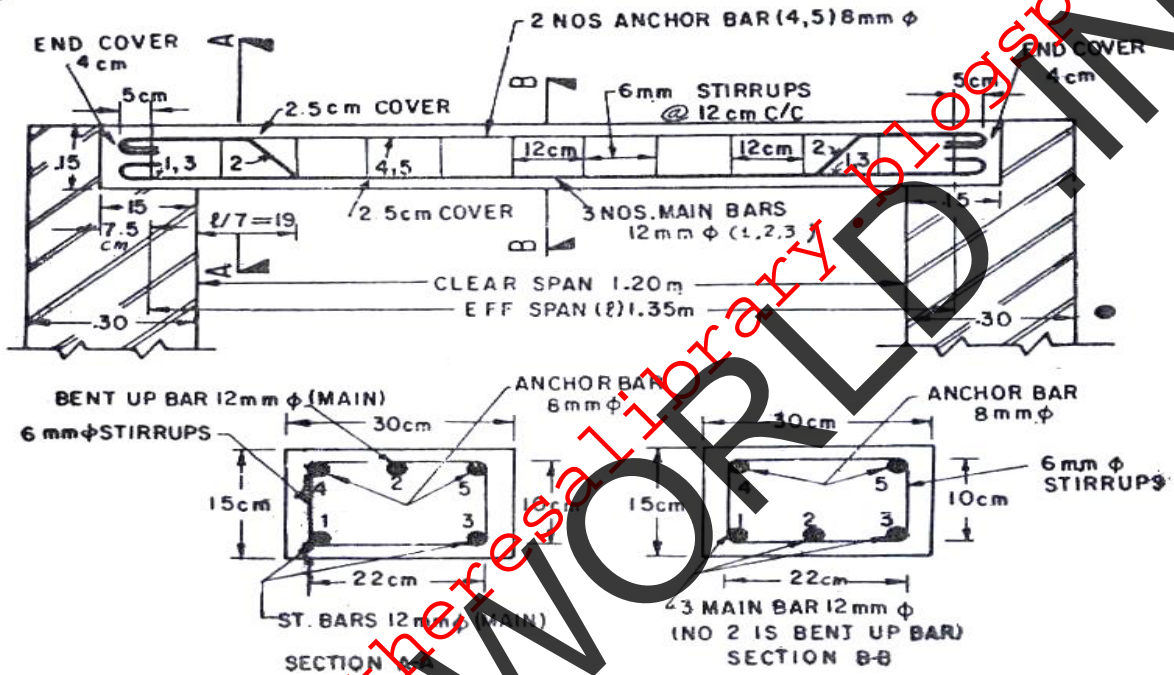


Code: 9A01605

5. Work out the quantity of steel in a R.C.C. lintel over a door opening from the given drawing. Also prepare the bar bending schedule.



6. (a) Why it is recommended to use standard forms of contract? What are the matters to be defined in the conditions of contract? Elaborate.
 (b) What are the contents of a tender document? Enumerate the complete tendering procedure with illustrations.
7. (a) Differentiate between the following:
 (i) Salvage value and scrap value. (ii) Free hold and lease hold properties.
 (b) A property is let out a monthly rent of Rs. 1,500/-. If the out goings is taken at 30% of gross annual rent, and if the owner of the property expects a return of 12%, what is the capitalized value of the property?
8. Write detailed specifications for stone masonry, doors and windows.
